

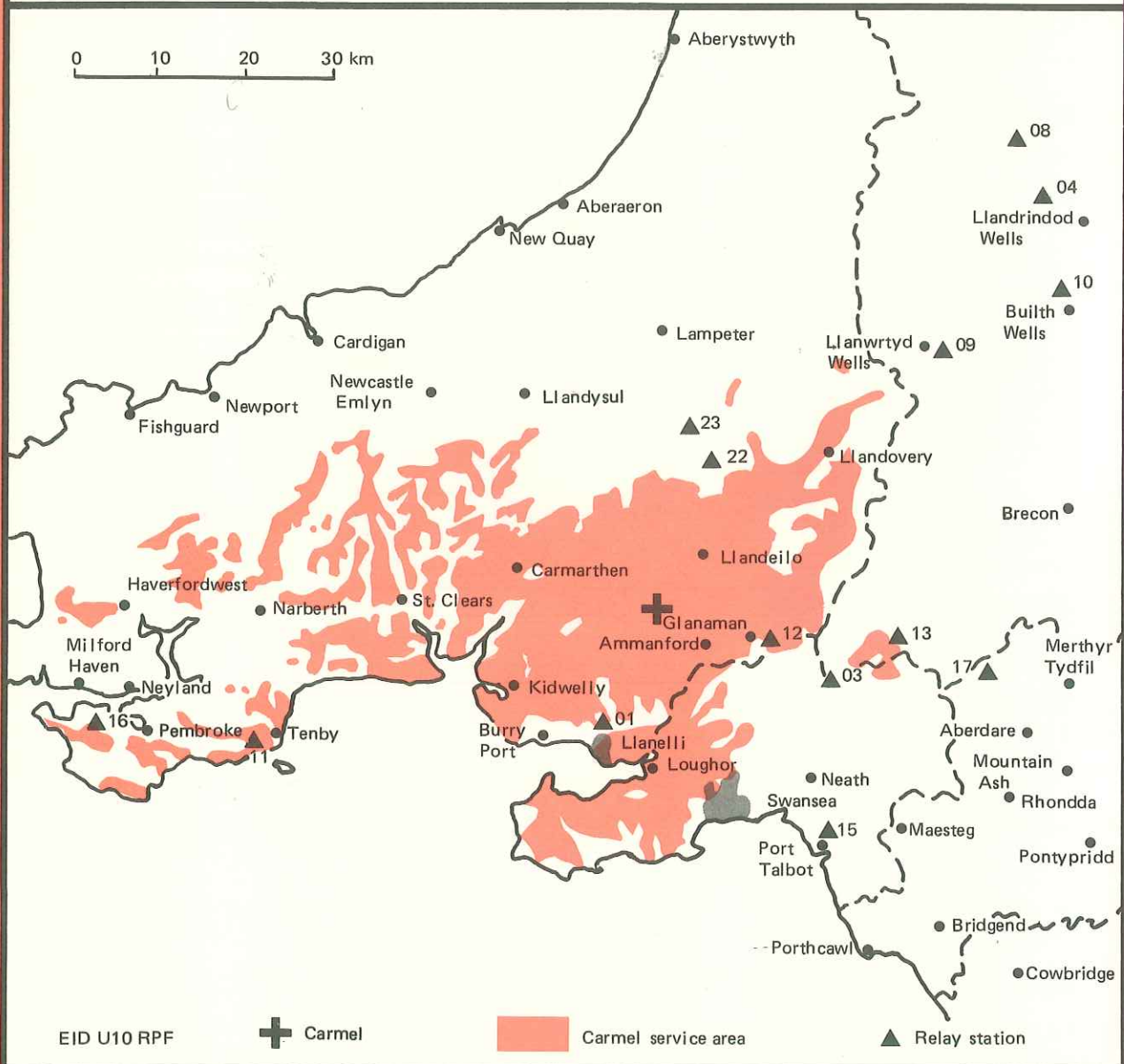


Engineering Information



Carmel UHF Television

BBC Wales	ch 57
BBC 2	ch 63
ITV	ch 60
Sianel 4 Cymru	ch 53
Maximum erp (vision)	100 kW
Polarisation	horizontal
Receiving aerial group	C/D
Mean height of transmitting aerial	156 m agl, 412 m aod
Transmitter site	Carmel, Dyfed
National Grid Reference	SN 576153



The service area is indicated by the coloured part of the map, but the boundary should not be interpreted as a rigid limit. As the quality of reception on uhf can be very different at places only short distances apart, there are, inevitably, small pockets of poor reception which cannot be shown. Details of relay stations are shown overleaf in numerical order.

Carmel relays

		BBC Wales	BBC2	ITV	S4C	Maximum erp (vision) kW	Pol'n	Receiving aerial group	Mean ht of Tx aerial		NGR
									m agl	m aod	
01	Llanelli	39	45	49	67	0.1	V	E	32	139	SN 510023
03	Ystalyfera	39	45	49	42	0.05	V	B	58	367	SN 778079
04	Llandrindod Wells	39	45	49	42	2.25	V	B	63	505	SO 018635
08	Rhayader	33	26	23	29	0.1	V	A	48	396	SN 986702
09	Llanwrtyd Wells	21	27	24	31	0.01	V	A	24	267	SN 899454
10	Builth Wells	22	28	25	32	0.026	V	A	23	267	SO 036528
11	Tenby	39	45	49	42	0.031	V	B	12	100	SS 109994
12	Cwmgors	21	27	24	31	0.026	V	A	17	199	SN 705123
13	Abercraf	22	28	25	32	0.125	V	A	48	321	SN 851124
15	Mynydd Emroch	40	46	43	50	0.0125	V	B	27	210	SS 776901
16	Greenhill	21	27	24	31	0.074	V	A	48	121	SM 925016
17	Penderyn	39	45	49	42	0.0125	V	B	11	300	SN 954089
22	Talley	39	45	49	42	0.006	V	B	16	229	SN 639332
23	Llansawel	22	28	32	25	0.0065	V	A	16	178	SN 618368