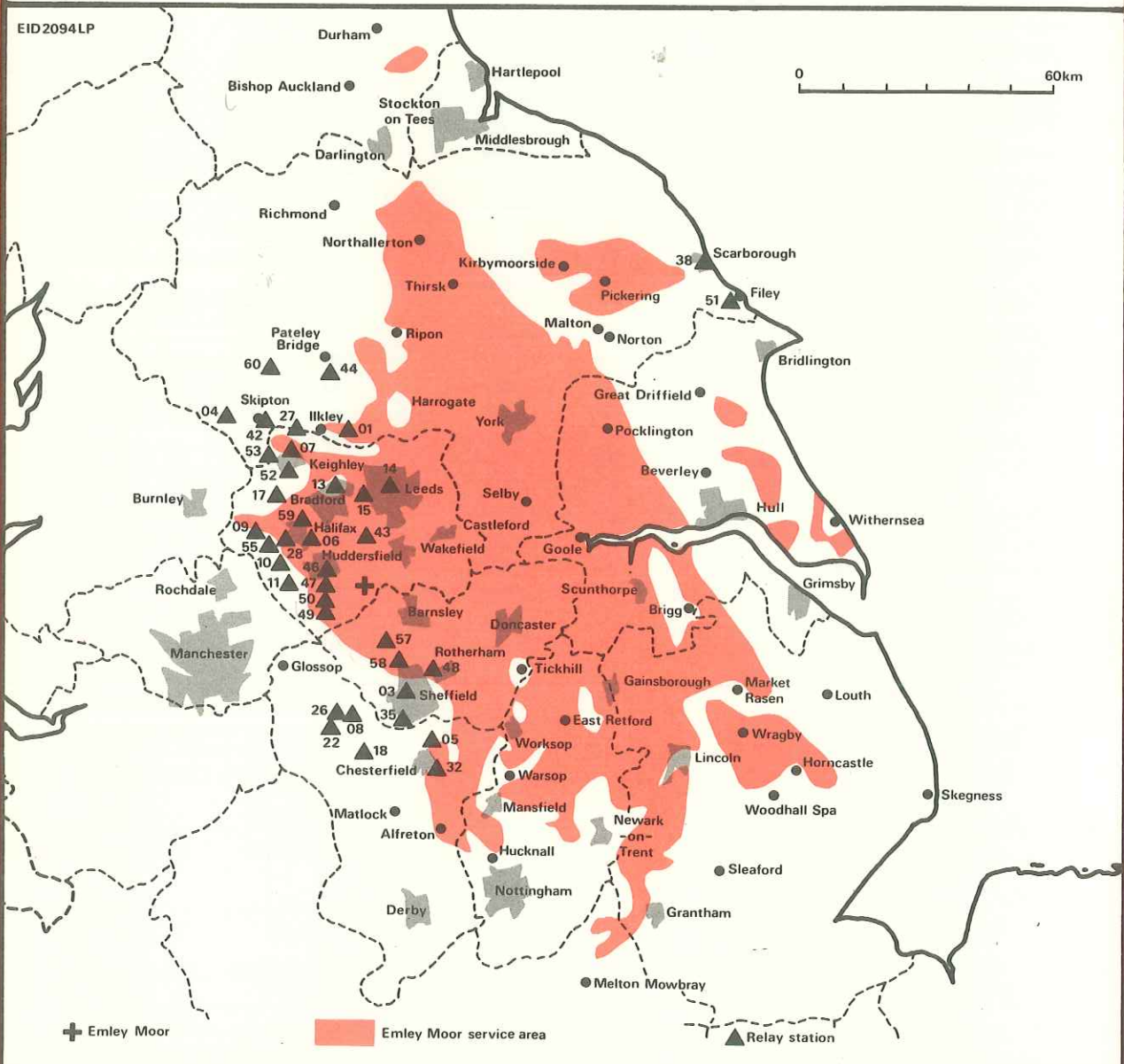




Emley Moor UHF Television

BBC 1 (North)	ch 44
BBC 2	ch 51
ITV	ch 47
Channel Four	ch 41
Maximum ERP (vision)	870 kW
Polarisation	horizontal
Receiving aerial group	B
Mean height of transmitting aerial	317m agl, 577m aod
Transmitter site	Emley Moor, West Yorkshire
National Grid Reference	SE 223129



The service area is indicated by the coloured part of the map, but the boundary should not be interpreted as a rigid limit. As the quality of reception on uhf can be very different at places only short distances apart, there are, inevitably, small pockets of poor reception which cannot be shown. Details of relay stations are shown overleaf in numerical order.

Emley Moor relays

	BBC 1 North	BBC 2	ITV	Ch 4	Maximum erp (vision) kW	Pol'n	Receiving Aerial group	Mean ht of Tx aerial		NGR
								m agl	m aod	
01 Wharfedale	22	28	25	32	2	V	A	51	312	SE 198485
03 Sheffield	31	27	24	21	5	V	A	49	299	SK 324870
04 Skipton	39	45	49	42	10	V	B	50	210	SD 909517
05 Chesterfield	33	26	23	29	2	V	A	51	234	SK 383764
06 Halifax	21	27	24	31	0.5	V	A	51	282	SE 103242
07 Keighley	58	64	61	54	10	V	C/D	51	355	SE 069444
08 Shatton Edge	52	58	48	54	1	V	C/D	48	414	SK 194814
09 Hebden Bridge	22	28	25	32	0.25	V	A	47	266	SD 988267
10 Ripponden	58	64	61	54	0.06	V	C/D	47	334	SE 043188
11 Cop Hill	22	28	25	32	1	V	A	45	354	SE 058138
13 Idle	21	27	24	31	0.25	V	A	48	269	SE 164374
14 Headingley	58	64	61	54	0.012	H	C/D	24	126	SE 299361
15 Beecroft Hill	55	62	59	65	1	V	C/D	48	196	SE 237351
17 Oxenhope	22	28	25	32	0.2	V	A	43	407	SE 028338
18 Calver Peak	39	45	49	42	0.25	V	B	48	322	SK 232743
22 Tideswell Moor	56	63	60	66	0.25	V	C/D	47	444	SK 148781
26 Hope	22	28	25	32	0.015	V	A	23	243	SK 170830
27 Addingham	40	46	43	50	0.023	V	B	38	190	SE 076492
28 Luddenden	57	63	60	67	0.059	V	C/D	38	294	SE 048248
32 Hasland	57	63	60	53	0.065	V	C/D	24	140	SK 406698
35 Totley Rise	39	45	49	42	0.012	V	B	16	184	SK 322807
38 Oliver's Mount	57	63	60	53	1	V	C/D	38	189	TA 040869
42 Skipton Town	21	27	24	31	0.013	V	A	23	185	SD 998509
43 Batley	57	63	60	67	0.013	V	C/D	19	107	SE 239249
44 Heyshaw	57	63	60	53	0.5	V	C/D	38	333	SE 170631
46 Primrose Hill	57	63	60	67	0.028	V	C/D	37	197	SE 143151
47 Armitage Bridge	58	64	61	54	0.0065	V	C/D	29	166	SE 132133
48 Wincobank	55	62	59	65	0.0015	V	C/D	26	68	SK 388919
49 Holmfirth	49	66	56	68	0.026	V	C/D	29	224	SE 140086
50 Hagg Wood	55	62	59	65	0.033	V	C/D	36	197	SE 148105
51 Hunmanby	40	46	43	50	0.06	V	B	37	122	TA 092779
52 Keighley Town	33	26	23	29	0.006	V	A	38	178	SE 065405
53 Sutton-in-Craven	33	26	23	29	0.006	V	A	25	292	SE 004428
55 Cragg Vale	58	64	61	54	0.025	V	C/D	31	314	SE 003229
57 Stocksbridge	58	64	61	54	0.012	V	C/D	19	322	SK 275991
58 Oughtibridge	55	62	59	65	0.039	V	C/D	30	295	SK 307952
59 Holmfield	55	62	59	65	0.011	V	C/D	18	331	SE 089295
60 Grassington	33	26	23	29	0.06	V	A	24	329	SE 015639